

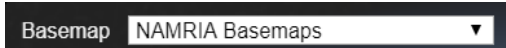
Geoportal Philippines

How to use GP in 3D



Toolbar

The Toolbar displays the tools that can be performed.



- Switch basemap
This provides different basemap options to use. Currently available are Philippine Geoportal basemap, Bing maps, ArcGIS Online, Open Street Map, Ortho Image 2011 (for selected areas only), Ortho Image 2013-2014 (for selected areas only), and NAMRIA Ortho Rectified Radar Image.
- Navigation Instructions
This contains the instructions on how to navigate the map.
- Full extent
This is used to zoom the map to the whole extent of the Philippines
- Location search
This allows user to go to a certain location on the map.

Geoportal Philippines

Map Pane

The Map pane displays the base map and map overlays.

Available Layers Pane

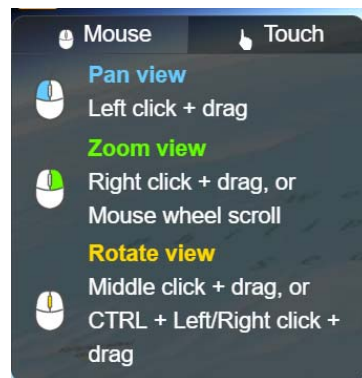
Available layers pane displays all the available layers that user can use.

Loaded Layers Pane

Loaded layers pane lists all the layers currently loaded onto the map.

How to navigate the map

1. Click the Navigation Instruction icon.
2. The navigation instructions will be displayed.



Geoportal Philippines

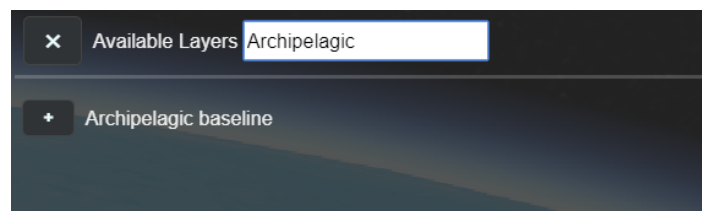
How to load a layer

1. Click the **plus '+'** button beside the layer in the **Available Layers Panel**.
2. The layer will be displayed in the **Map Panel**, added in the list of **Loaded Layers Panel**, and the corresponding legend will be displayed in the **Legend Panel**.



How to search a layer

1. Enter a keyword in the **search** textbox.
2. The **Available Layers Panel** will display the layers that matches with the keyword entered.



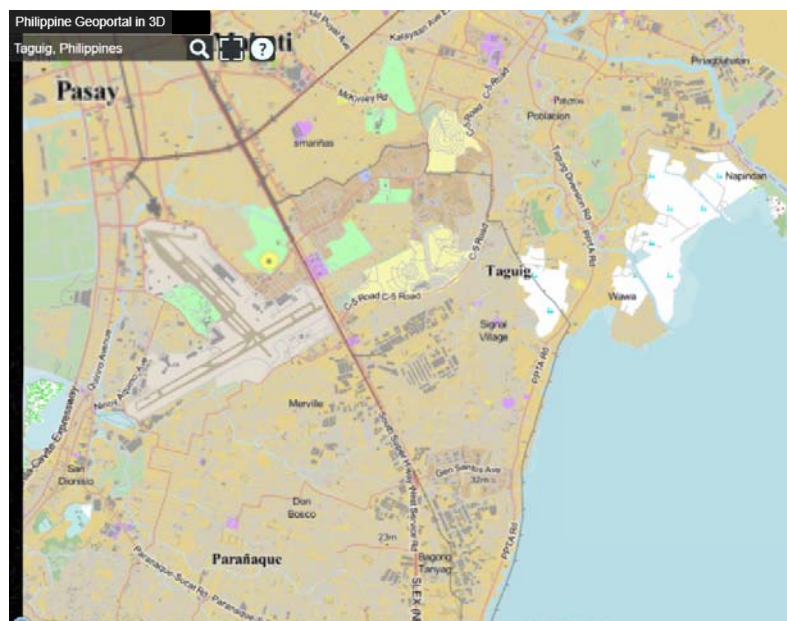
How to select an attribute

1. Select a feature from the **Map Panel**.
2. The selected feature will be marked with a green mark, and the attribute of the feature will be displayed.



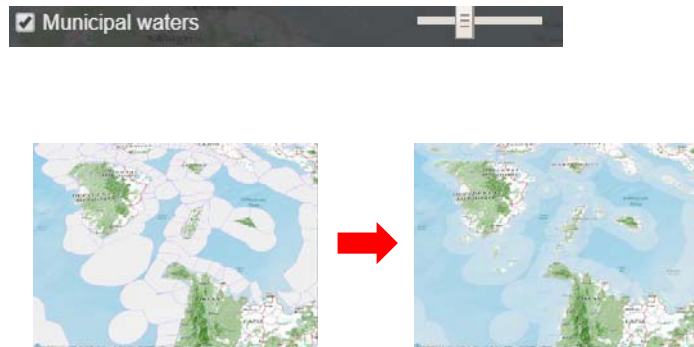
How to use location search

1. Hover the mouse over the **location search** icon to display the **location search** textbox.
2. In the **location search** textbox, enter a location and click the **location search** icon.
3. The map will zoom in on the location entered.



How to set layer opacity

1. In the list of **Loaded Layers**, drag the slider beside the layer to adjust layer opacity.



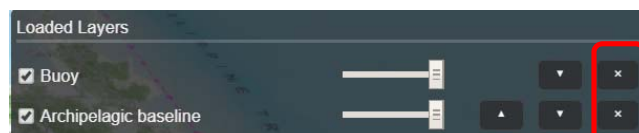
How to rearrange layers

1. In the **Loaded Layers**, click the up arrow to move layer up or down arrow to move the layer down.



How to remove a layer

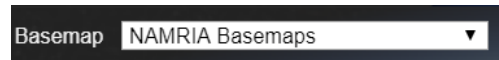
1. In the list of **Loaded Layers**, Click the 'x' button.



2. The selected layer will be removed from the **Loaded Layers Panel**, **Map Panel**, and in the **Legend Panel**.

How to switch basemap

1. Select a basemap from the **dropdown** list.



2. The basemap will change based on the selection.

